

WASHINGTON

spaces

DC • MD • VA • GUIDE TO LUXURY LIVING

\$5.95
SPRING 2008
DISPLAY UNTIL
07.07.08

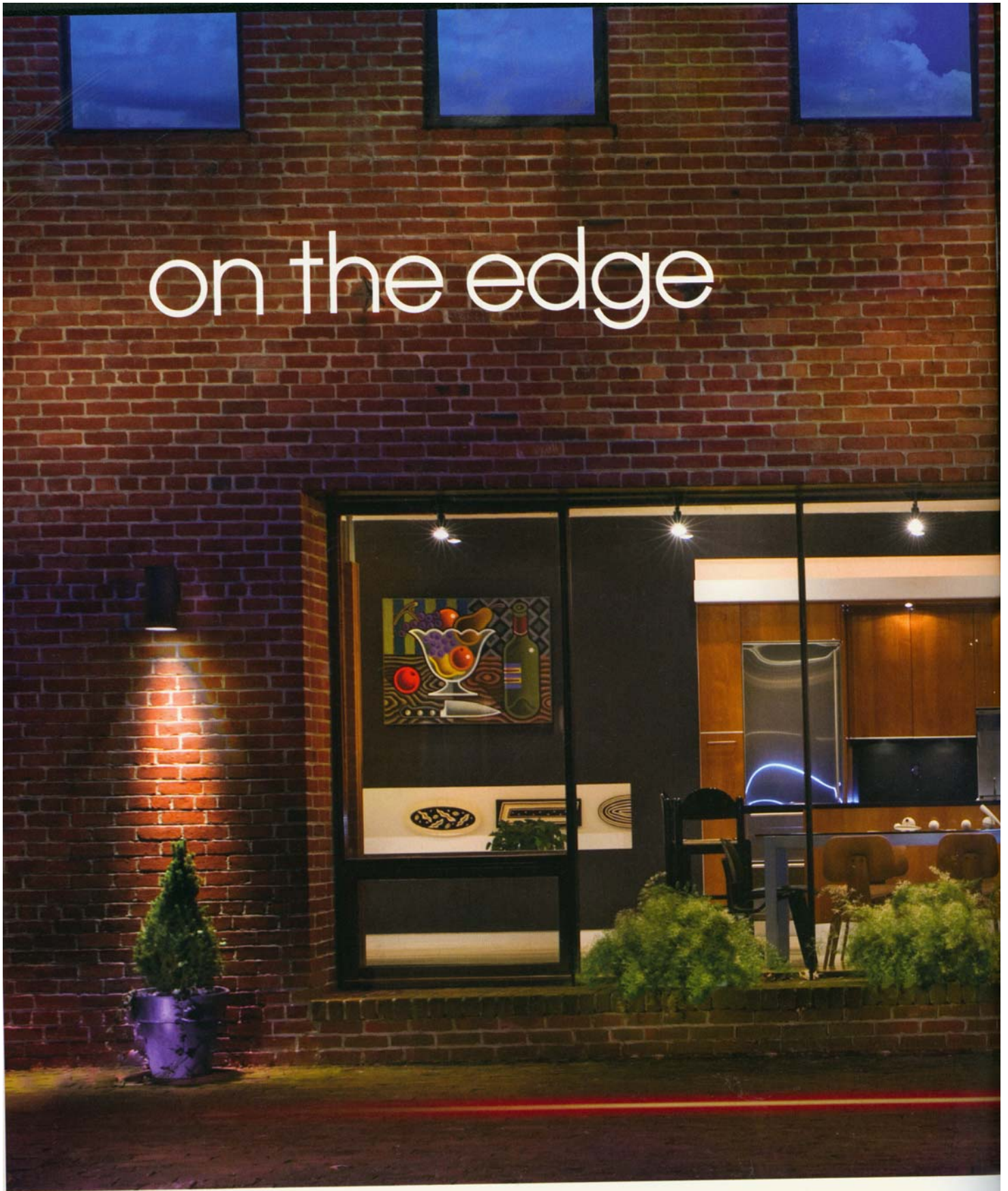


Livable Scale 36

Timeworn Elegance 50

Unforgettable Interiors 75

on the edge

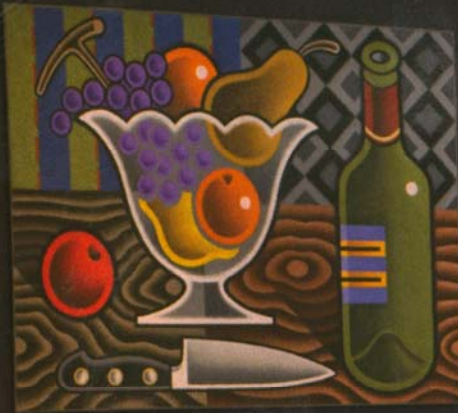




A CONTEMPORARY SPACE IN OLD TOWN ALEXANDRIA

WRITTEN BY **TRISH DONNALLY** | PHOTOGRAPHY BY **MORGAN HOWARTH**

Architect Mark McInturff of McInturff Architects readapted a former art gallery into a residence for April Burke and Dick Flynt.



McInturff helped select the elements for the Snaidero kitchen, including Dornbracht faucets, Absolute Black granite, and a 26 1/2-inch-wide Sub-Zero. The refrigerator, narrower than most, works for Burke and Flynt, who don't cook much. The painting by Margaret Kasahara is from Art and Soul Gallery in Boulder, CO.

OPPOSITE, BELOW: Daniel Donnelly custom made the sofa and 10-foot-long dining room table. The Eames potato-chip chairs, the Eames Lounge and Ottoman, and the antique comb are also from his store. Dee Thornton selected the armchairs from Stewart Furniture, the rug from Foundation, and the coffee table from Donghia.



Urban Interaction

"The thrill of this whole space and the urban/voyeur, anti-privacy thing was fun," McInturff says. "I enjoyed playing with the unexpectedly high degree of transparency out of – and into – a residence that was essentially part of the streetscape, which is not a typical situation." McInturff custom designed sliding shoji-style translucent screens that veil the windows, leaving about a foot open near the ceiling.

"I like to make the sidewalk sort of part of the house," Flynt says. "April likes the screens closed and more private."

McInturff says, "I love the idea that on a Sunday morning, Dick and April can throw the screens open and be fixing breakfast while people are walking by. It's the whole voyeuristic thing. They fit in this house amazingly well. Dick opens the screens and April closes them." He adds, "It's a little bit

like the old fashioned front porch. You sit on the front porch and people walk by. This porch happens to be inside the home."

"The best part about the house is that it's all one room. In our old, traditional house, we had rooms that never got used. There were so many different spaces to be in that it didn't bring people together. We wanted a communal space," Burke says. "The one downside of one big room is you can't clutter it up."

By contrast, the lower level, which is also one large open room, has no windows, but wonderful art, including posters and signs from the early 20th century that Burke has collected over many years. A huge sign of a hamburger on a bun, for instance, was found at a hamburger stand that was closing in Pittsburgh. As Flynt sums it up, "It's a fun place to live." **ws**

RESOURCES

■ **Daniel Donnelly Modern Design Studio**
703.549.4672
danieldomnelly.com

■ **Fine Old Posters**
703.684.3656
fineoldposters.com

■ **Houseworks Interiors**
703.519.1900
houseworksinteriors.com

■ **McInturff Architects**
301.229.3705
mcinturffarchitects.com

■ **Snaidero**
202.484.8066
snaidero-usa.com

*Colors shown may not be exact. Visit benjaminmoore.com for more information.

"One wall of workings and an island is a very social kind of space," McInturff says.



Kitchen wall
Benjamin Moore
Galaxy
2117-20*

