

FLO R I D A

INTERNATIONAL MAGAZINE

CULTURE PLEASE!

SEASON'S HOTTEST ACTS

FASHION FORWARD
FUR FOR FLORIDA &
BOOKISH-CHIC STYLE

IN THE HOT ZONE
CHEFS TO KNOW &
KITCHENS THAT DO IT ALL

BATH DESIGN
TRAVEL DEALS &
DANIEL BOULUD'S
MIAMI DEBUT

OCTOBER 2010

\$3.95US \$6.95CAN

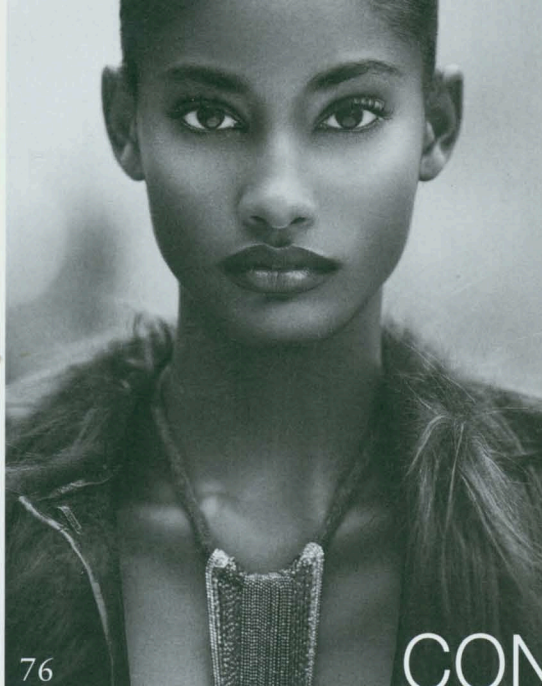
10>



floridainternationalmag.com

STRUCTURE

FASHION, ART & DESIGN THAT MAKE A BOLD STATEMENT



82

76

CONTENTS

56

O C T O B E R 2 0 1 0

FEATURES

- 38 ENTERTAINMENT: CULTURE FIX**
Let there be arts! Five compelling creators take the Florida spotlight in music, theater, literature and visual art — By Omar Sommereyns
- 48 COVER: SPEAKING OF STRUCTURE**
Design, art and architecture in Florida that command attention — By Luis R. Rigual
- 56 PROFILES: HOT STUFF**
The hottest chefs in Florida. The hottest kitchens in the market. Now we're cooking! — Text by Luis R. Rigual | Portraits by Pesaturo
- 64 DECOR: THE DESIGNER KITCHEN**
Florida professionals take on the heart of the home
- 68 DECOR: DESIGN FOR THE SOUL**
Mood, lines and aesthetics take the bath to new heights
- 72 PHOTO-OPS: THE PROGRESSIVES**
Four Miami men with forward-thinking vision
Text by Omar Sommereyns
Photography by Pesaturo
- 76 FASHION: WALK ON THE HIDE SIDE**
Whether as accent or main star, exotic skins have urban style well-covered — Photography by Alexander Hankoff
- 82 FASHION&DESIGN: MAKING THE CUT**
Fashion and interior design get the scissors to make cutouts the standout trend of the season
By Anetta Nowosielska & Brittany Lopez
- 86 FASHION: AN EDUCATION**
Smart, elegant fashion is in session for the season
Photography by Danny Miller

Correction/Clarification: In our September 2010 issue in the feature "Customer Support" on pages 62-63, Robert Weber was incorrectly identified as creative director of Macy's planning and design department. Weber is the creative director of the Echeverria Design Group.

COVER: Photograph of the Figge Conservatory at the Naples Museum of Art, the new permanent home of Louise Nevelson's *Dawn's Forest* sculpture installation. See "Speaking of Structure" on page 48.



STUFF

Venus curry-yellow kitchen with high gloss lacquer; at **Snaidero USA** showrooms.



Elate pullout kitchen faucet by **Kohler**, starting at \$275; at Lawrence Bath & Kitchen Showplace, Miami.



Ponti chair; at **Molteni & C Dada** showrooms.

